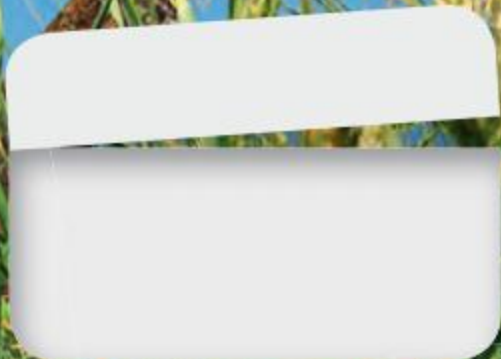


des lettres

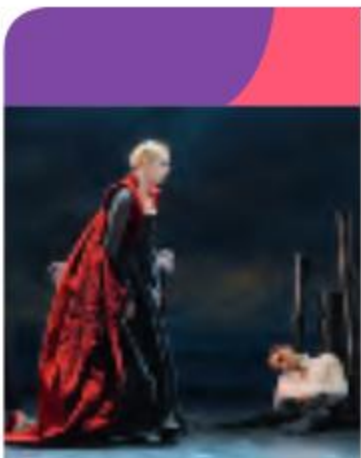
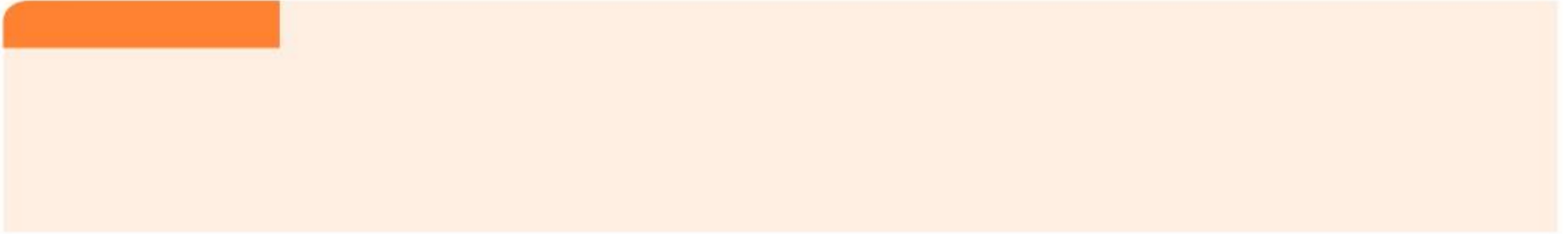


2

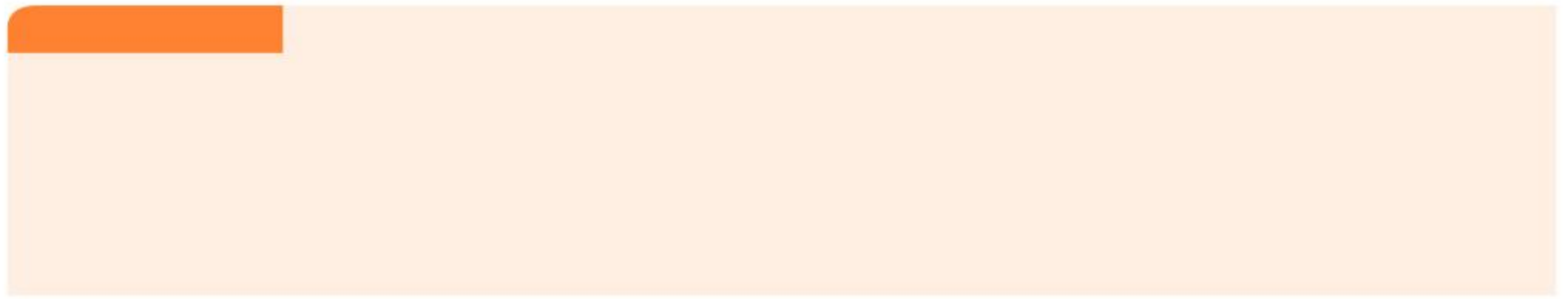
Programme
2019



hachette
ÉDUCATION

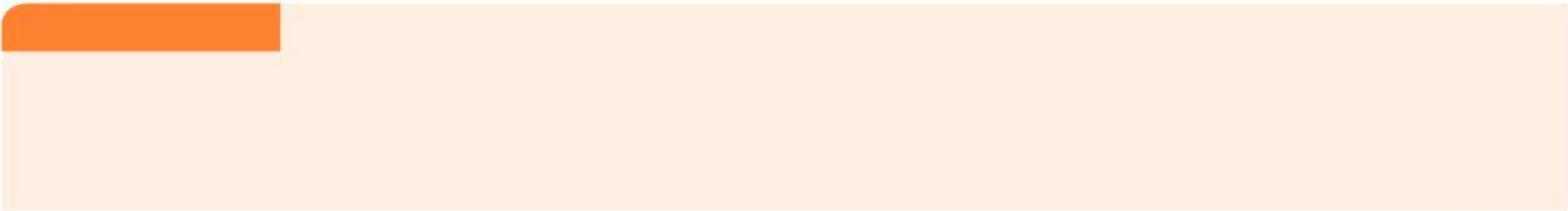




















A large, rounded rectangular area with a light orange border, containing two horizontal dotted lines for writing. The first line is preceded by a small teal square. The second line is preceded by a small teal square and followed by five red triangles pointing to the right, arranged vertically along the left margin.



c



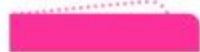
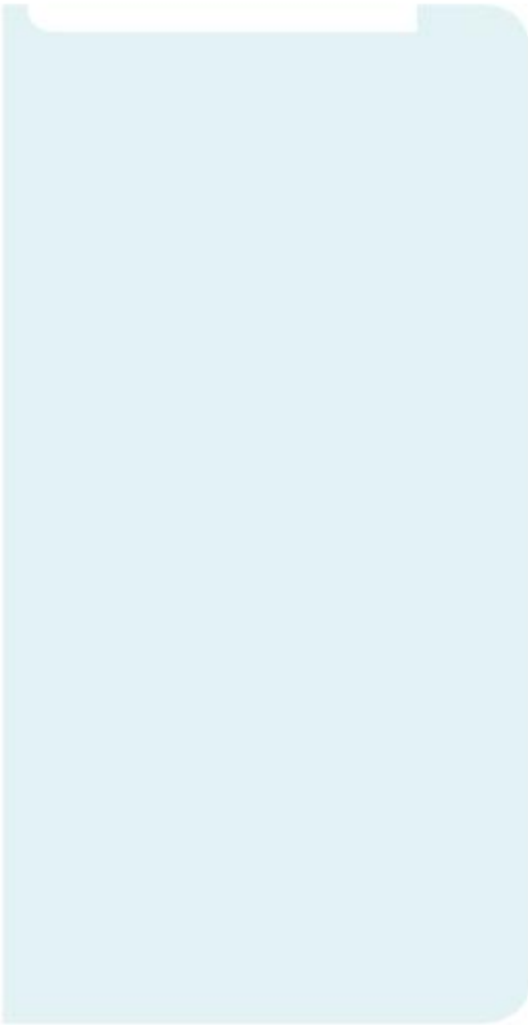


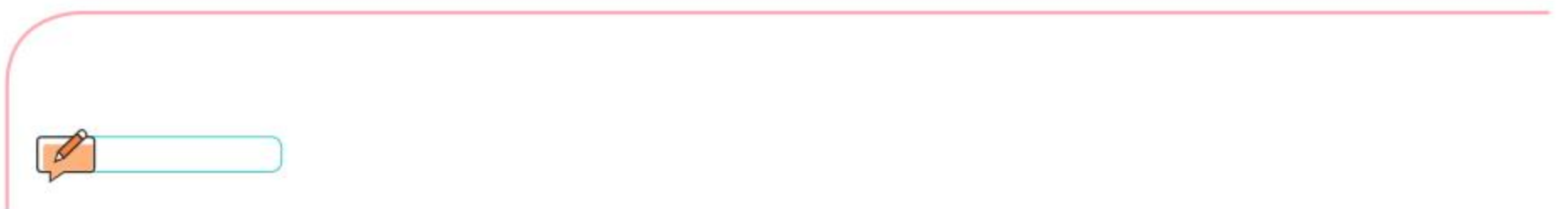
1939-1945

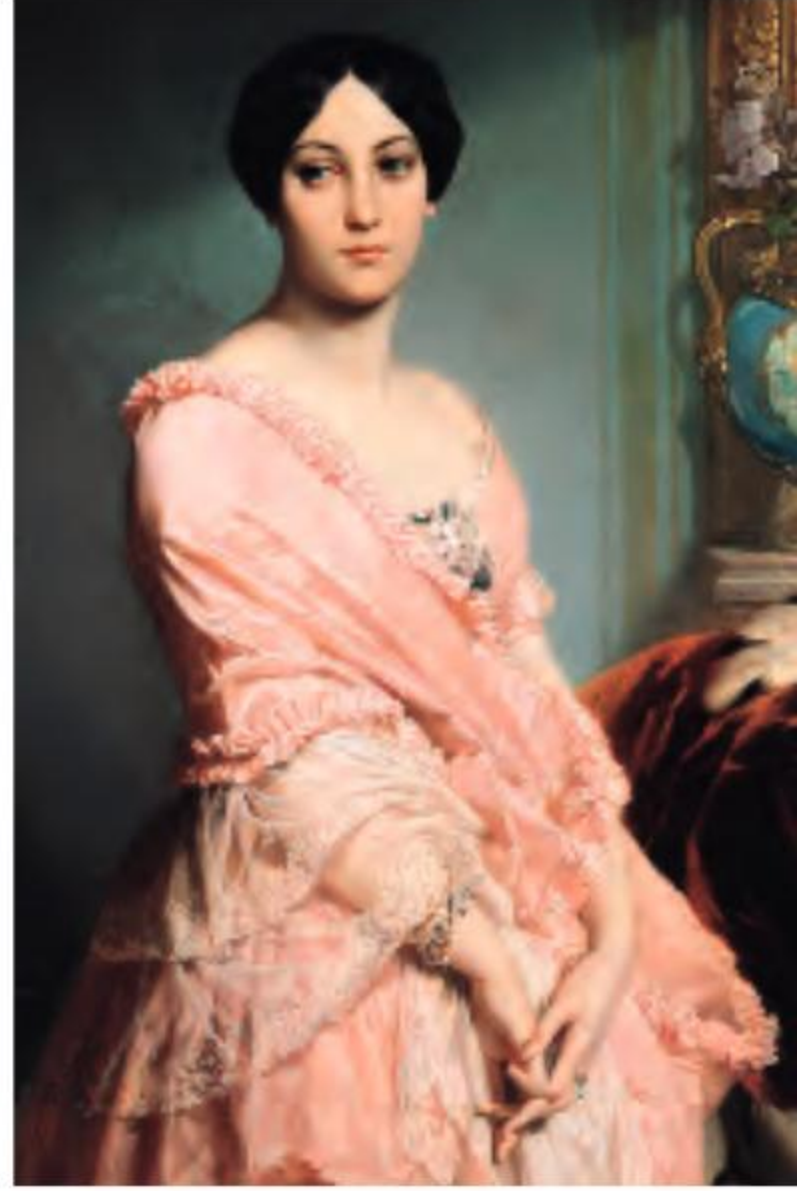
1946-1973

2008







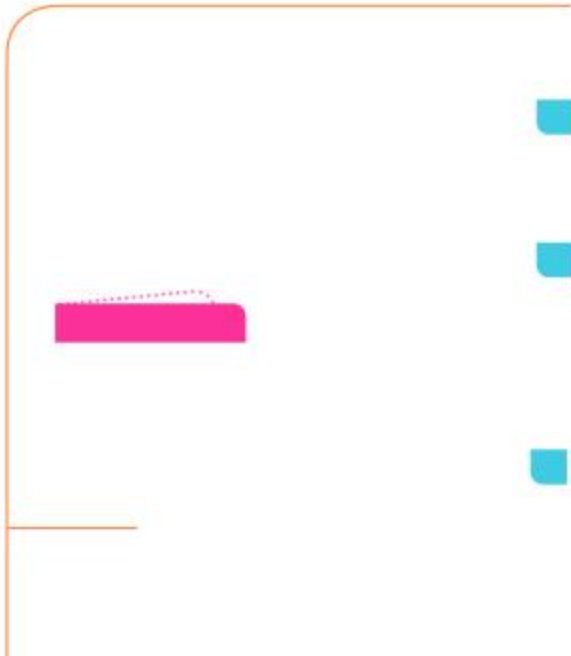






@







Oral



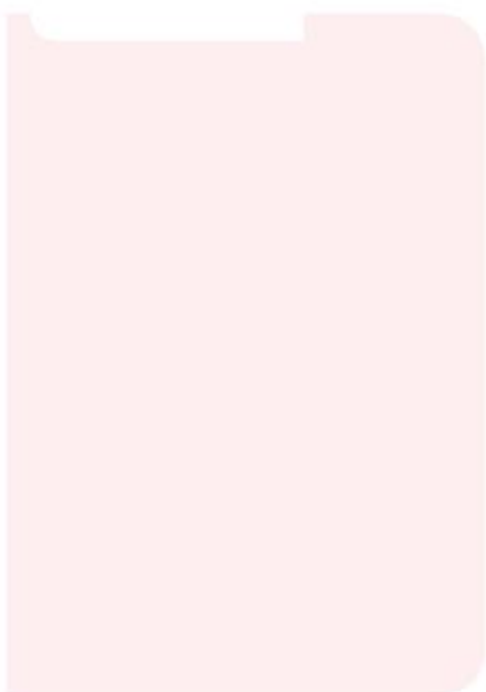


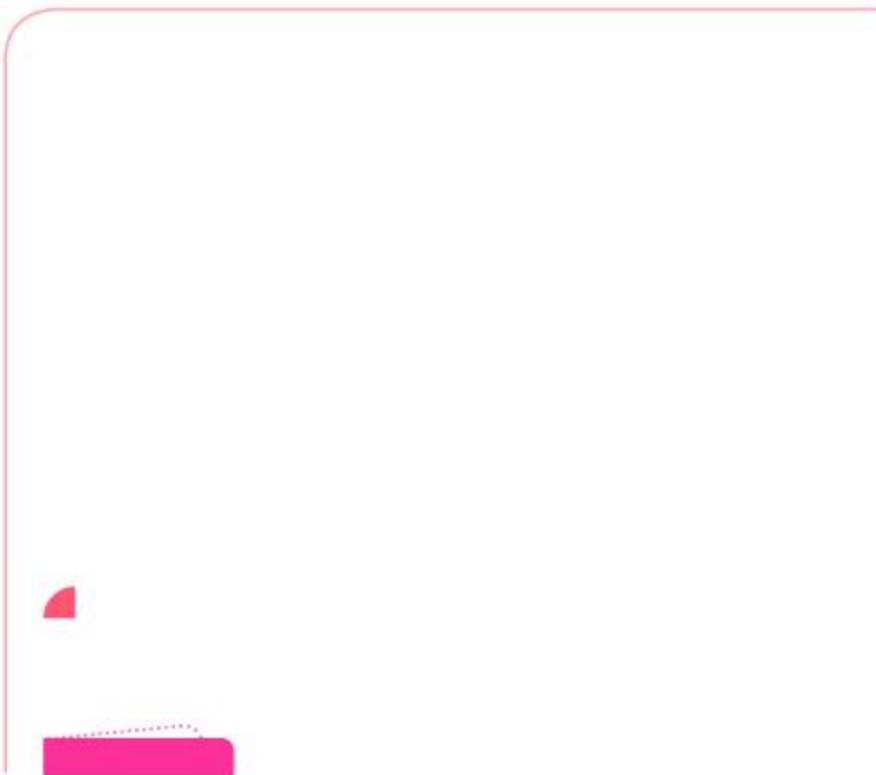
1

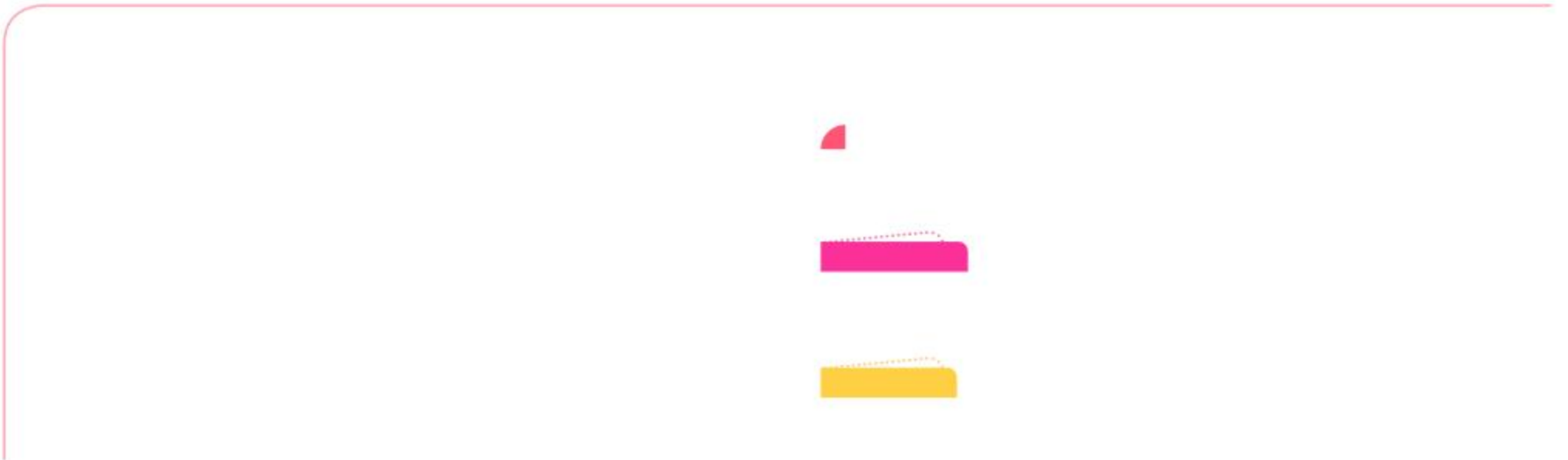
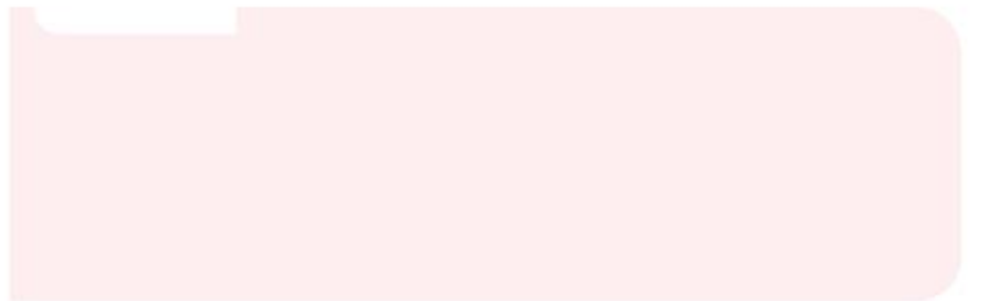




A decorative footer area consisting of a thin red line with rounded corners. It features a light blue horizontal bar at the top center, a yellow bar at the bottom left, and a pink bar at the bottom right. There are also small red semi-circular accents on the left and right sides of the top line.











Donnez la définition des couples d'antonymes ainsi

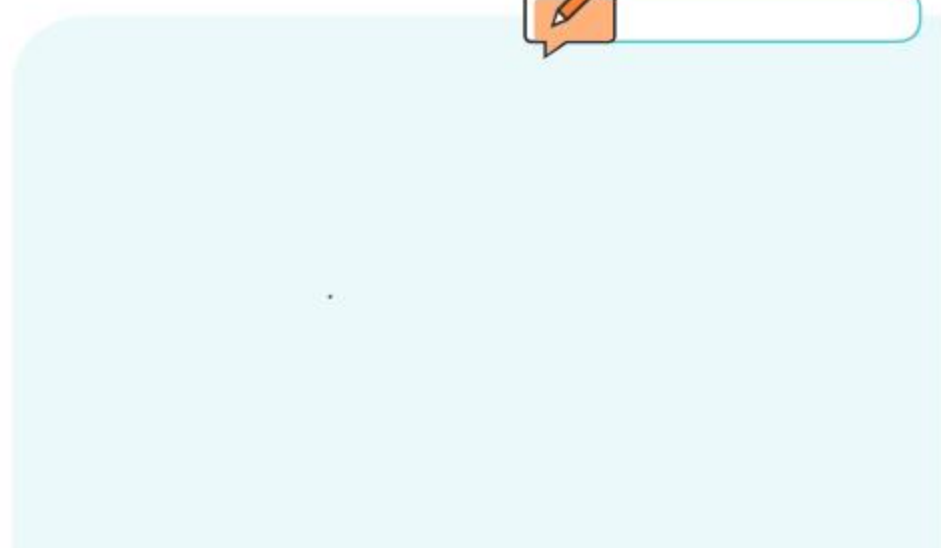
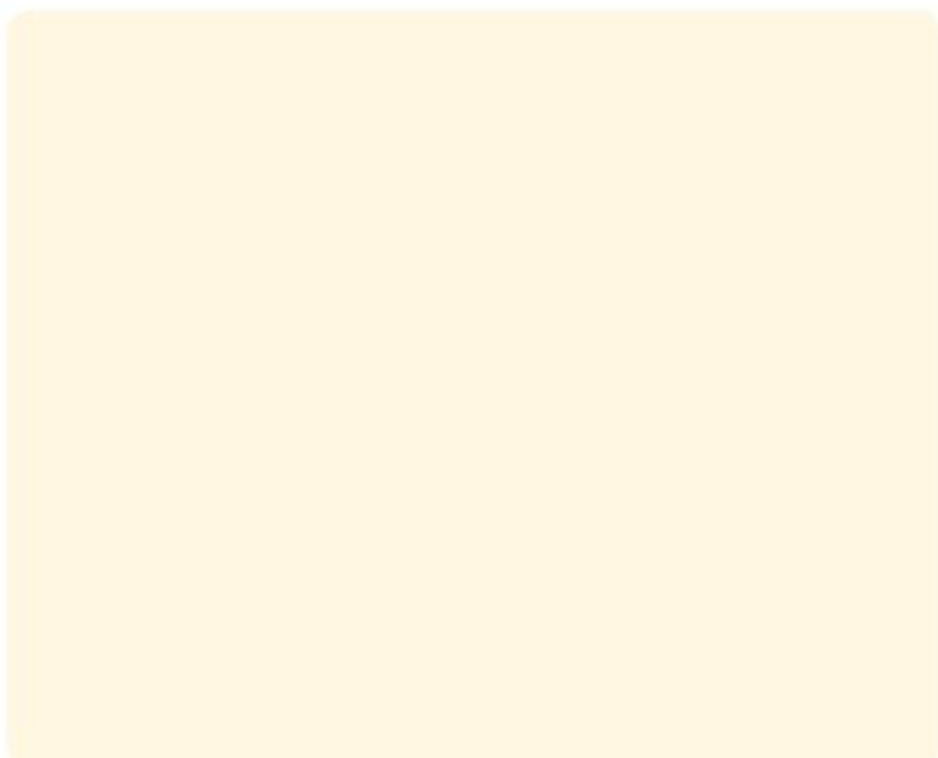
Cherchez la définition des mots que vous ne

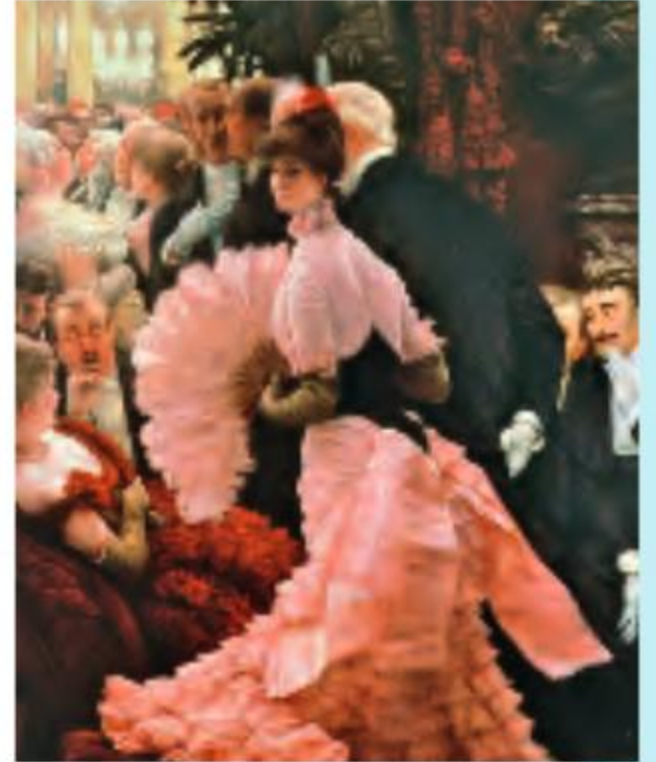
Lesquels de ces mots pourriez-vous utiliser pour



Sur quelles bases ces mots ont-ils été formés ?

*arrivisme – carriérisme – cynisme – égocentrisme –
égoïsme – individualisme – machiavélisme – matérialisme*



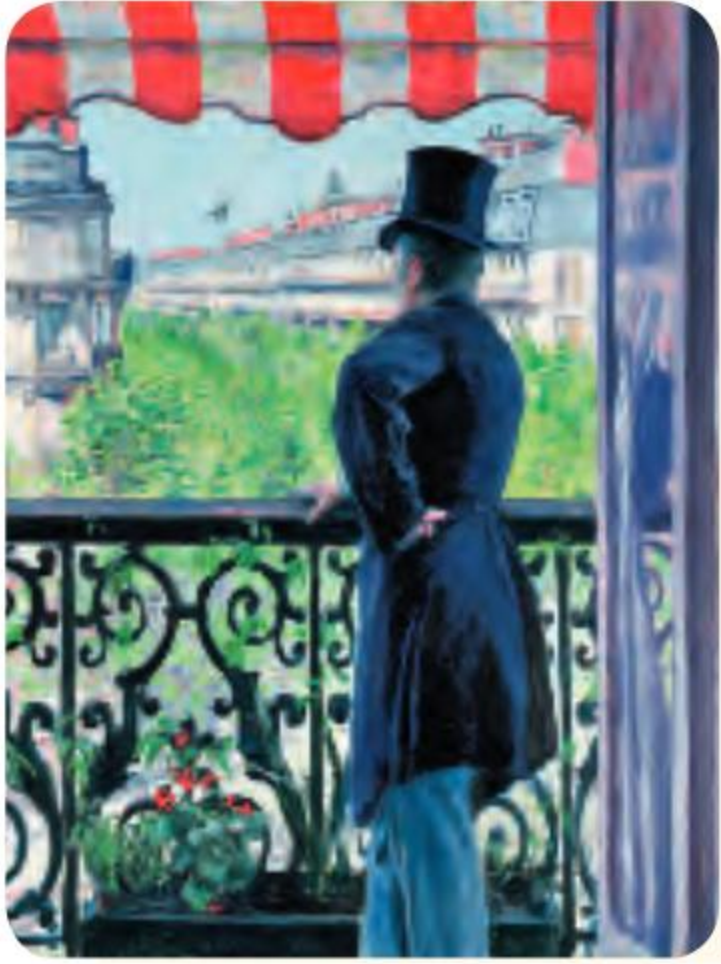


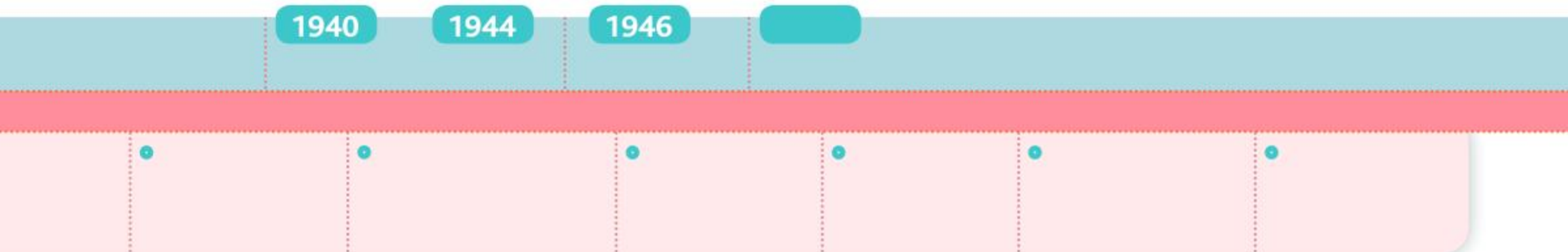
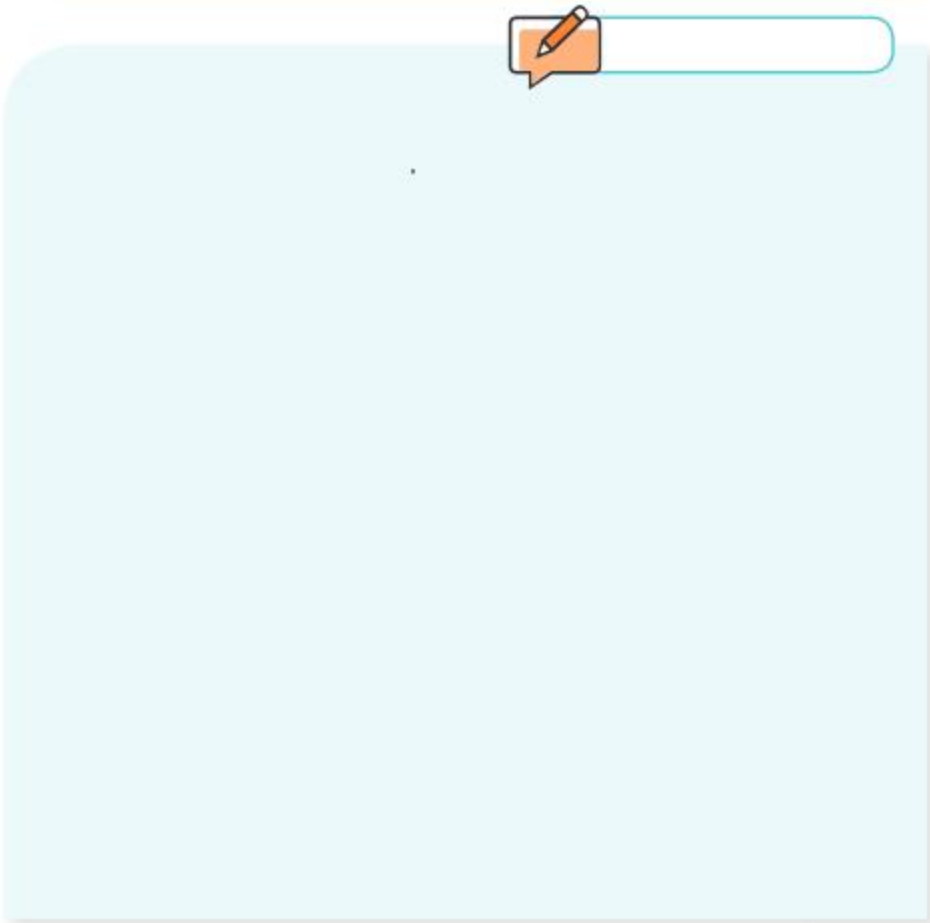
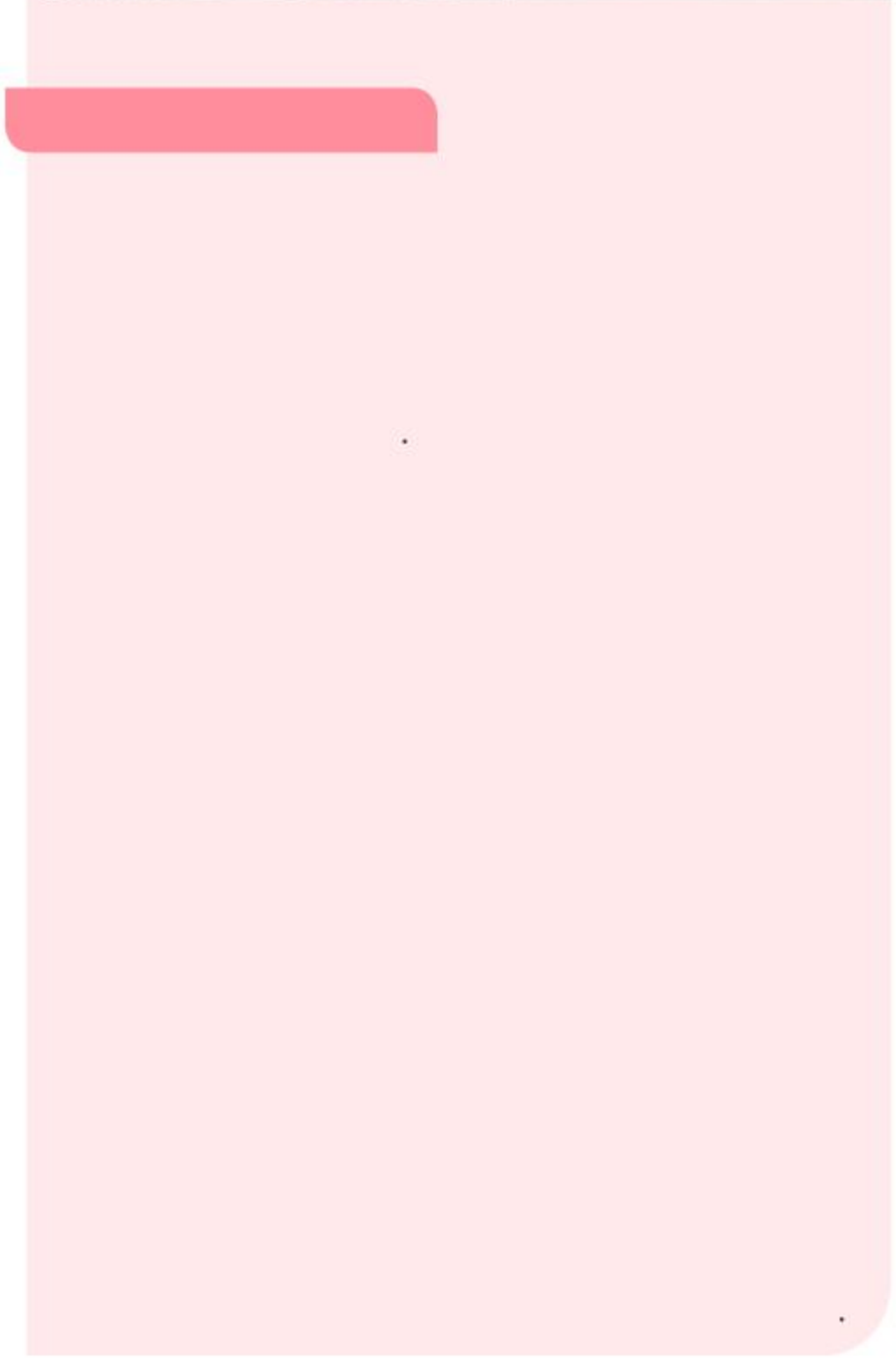
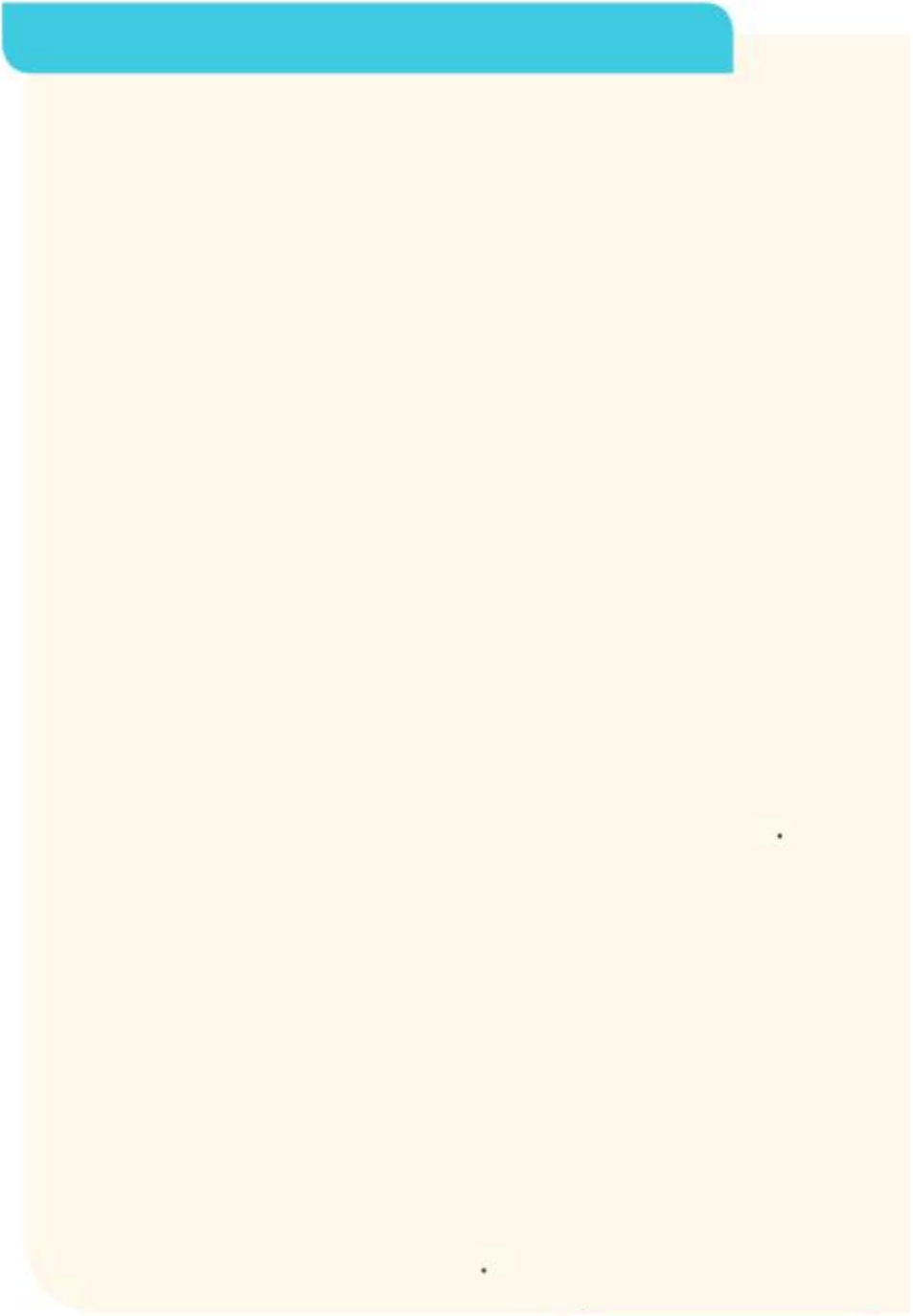
[Empty rounded rectangular box]

[Empty rounded rectangular box]

[Empty rounded rectangular box]

[Empty rounded rectangular box]





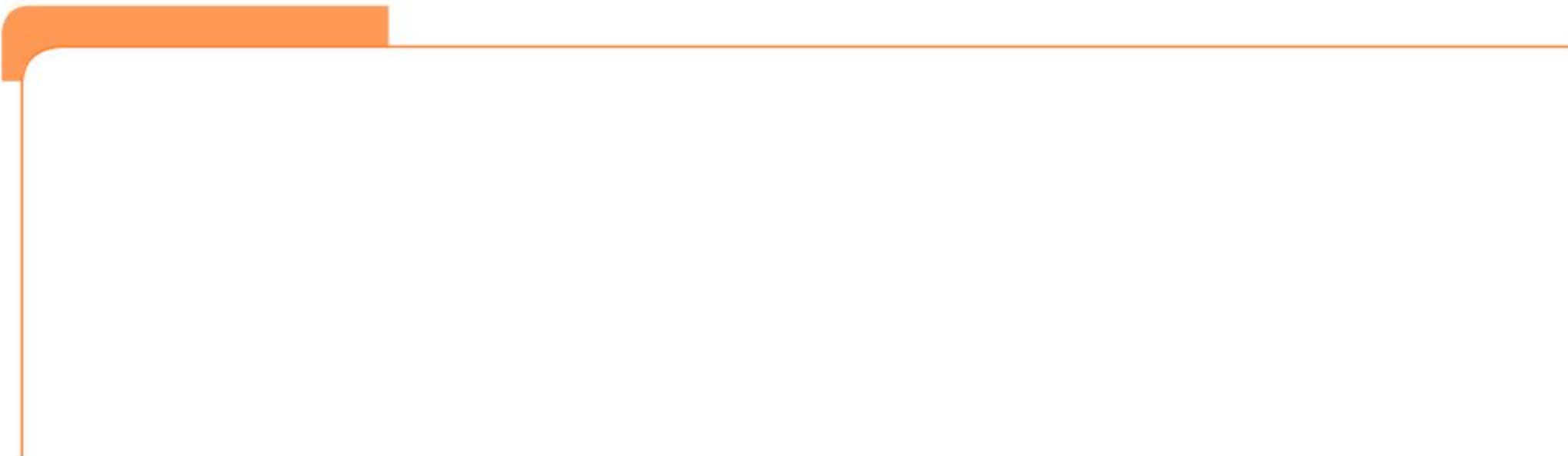
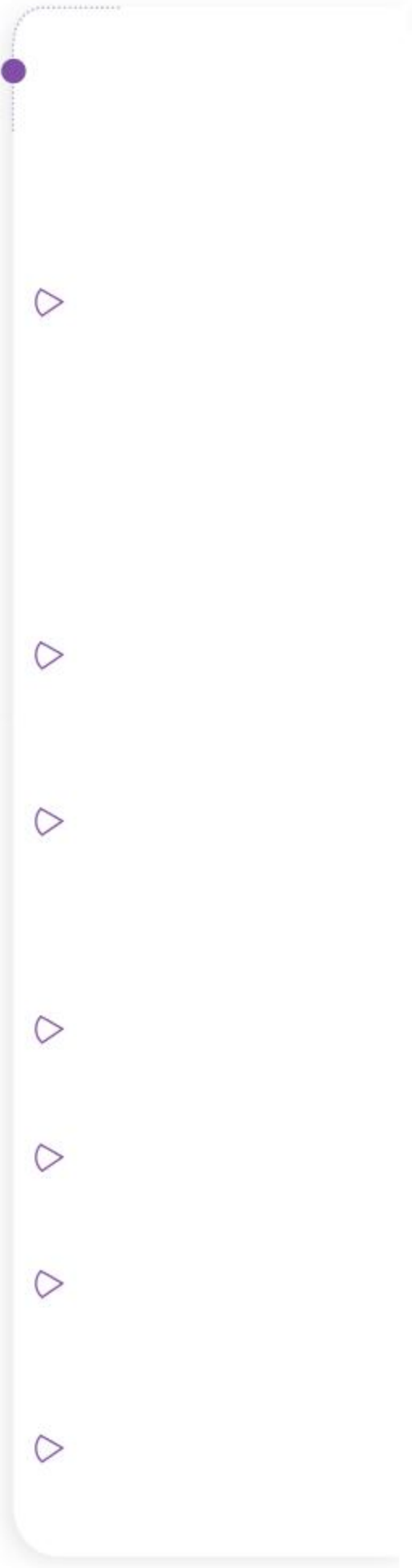
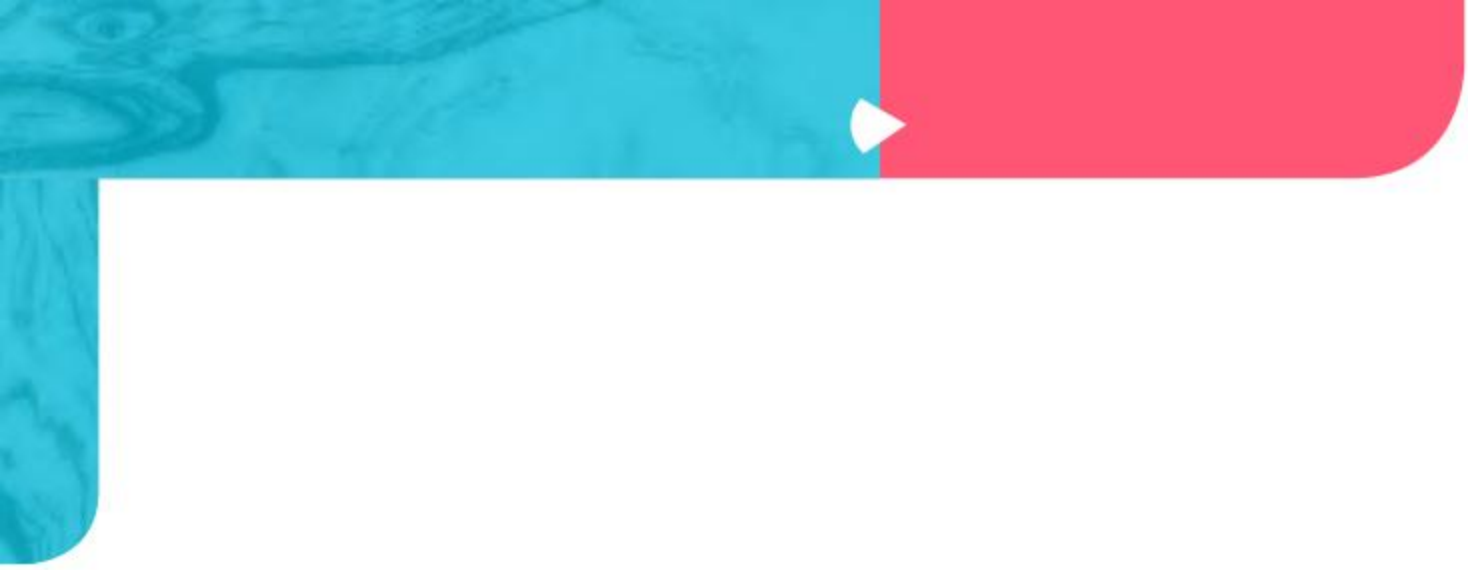


PAPIER À BASE DE
FIBRES CERTIFIÉES

 hachette s'engage pour
l'environnement en réduisant
l'empreinte carbone de ses livres.
Celle de cet exemplaire est de :

Rendez-vous sur
www.hachette-durable.fr





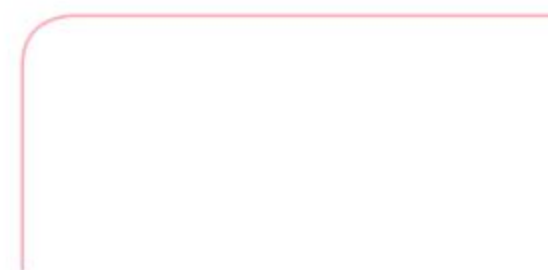
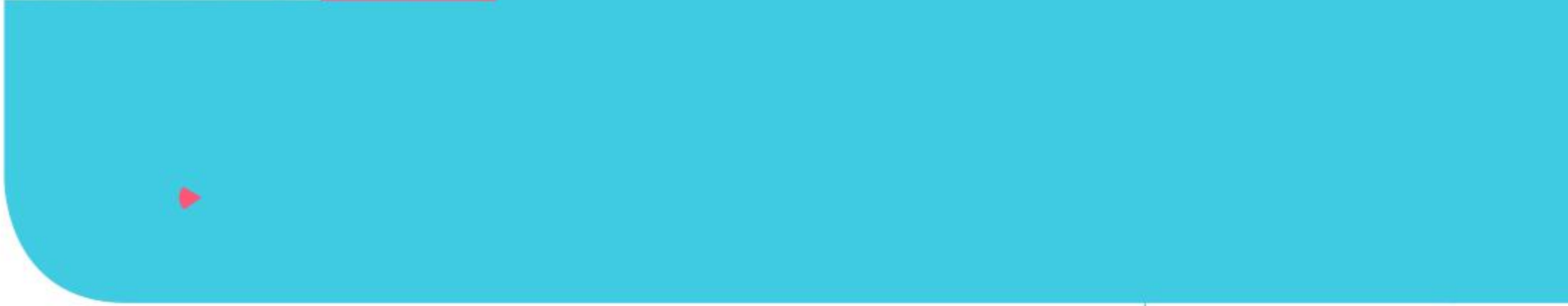
Selon vous, le personnage de Rastignac peut-il être un modèle pour le lecteur ?

fiction ← → réalité

Rastignac n'est pas un modèle à suivre car il incarne le type de l'ambitieux



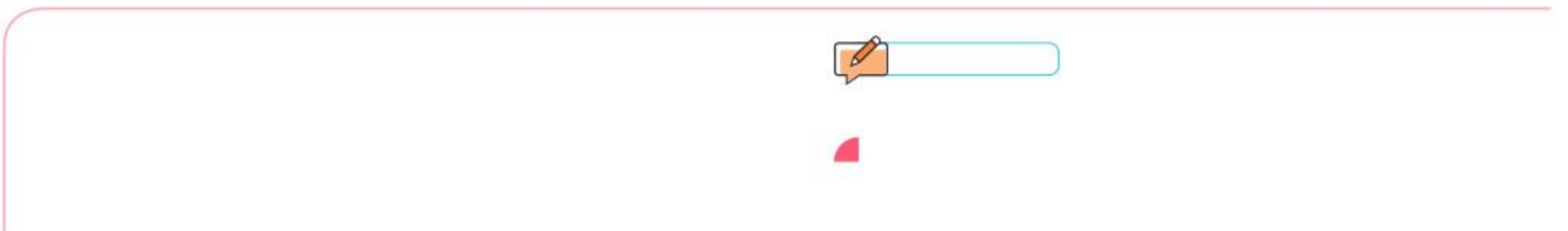
TIK.





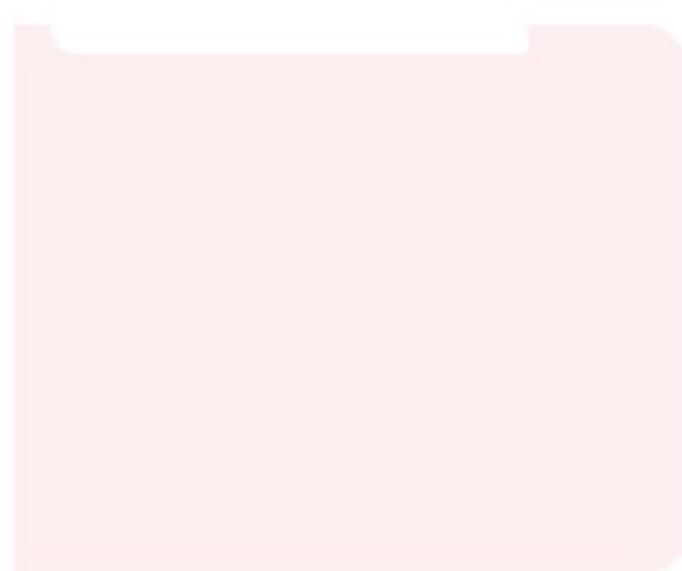


██████████



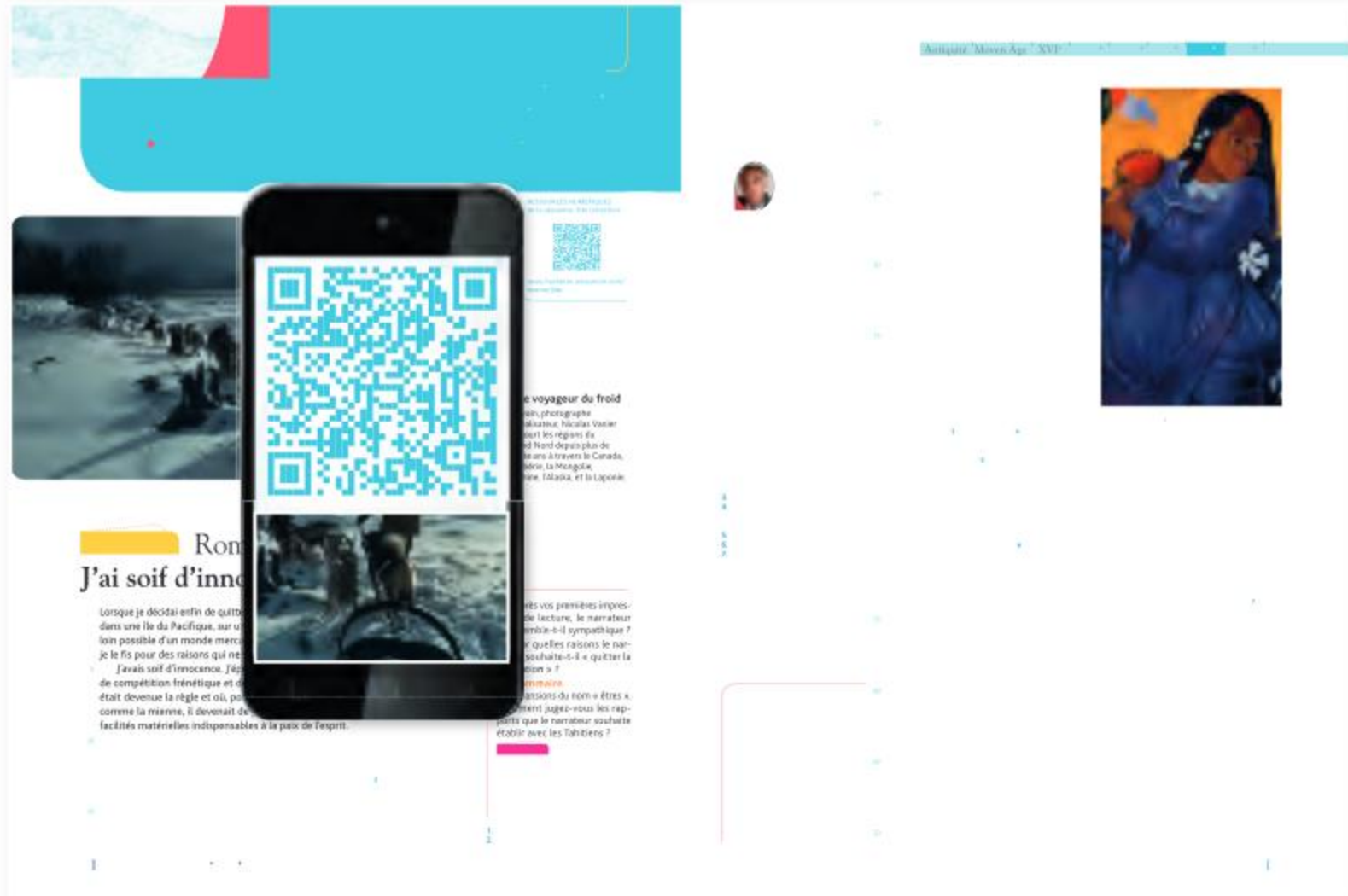


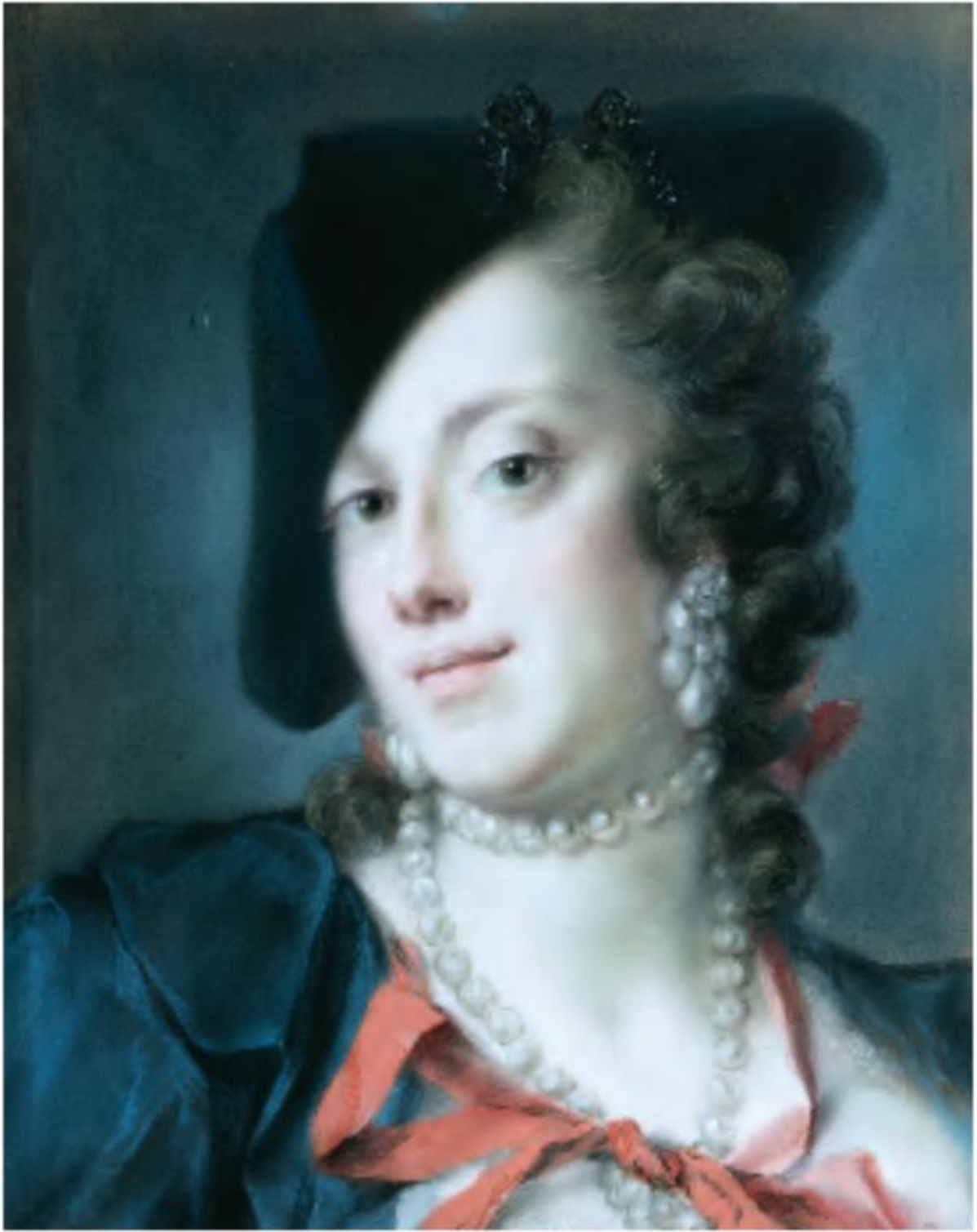








■ ■ ■
sont-ils « modernes » ? ■ ■

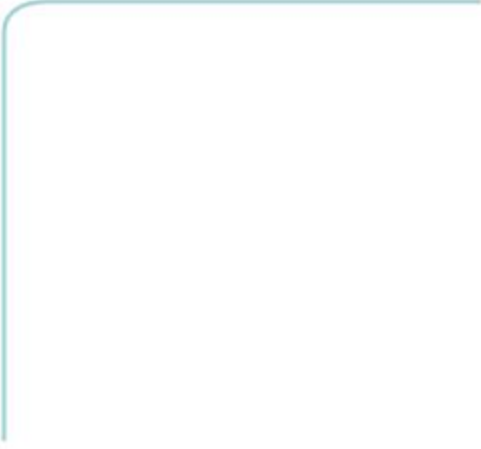






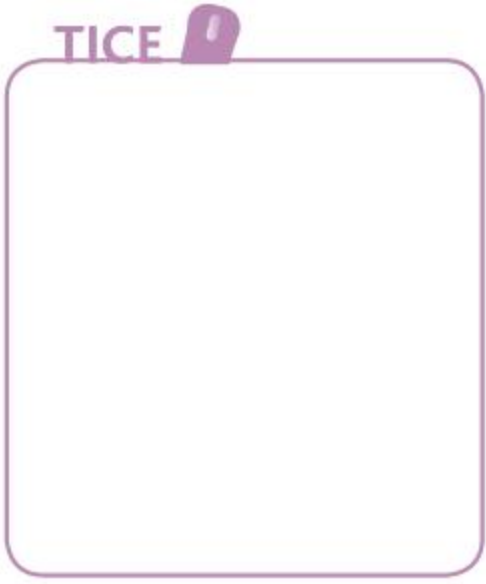


 	 
--	--







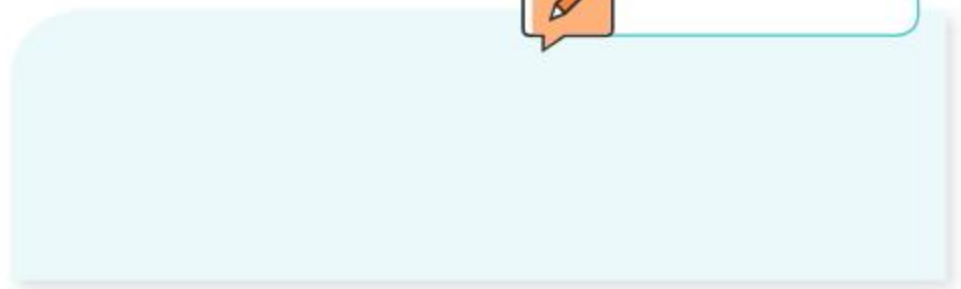
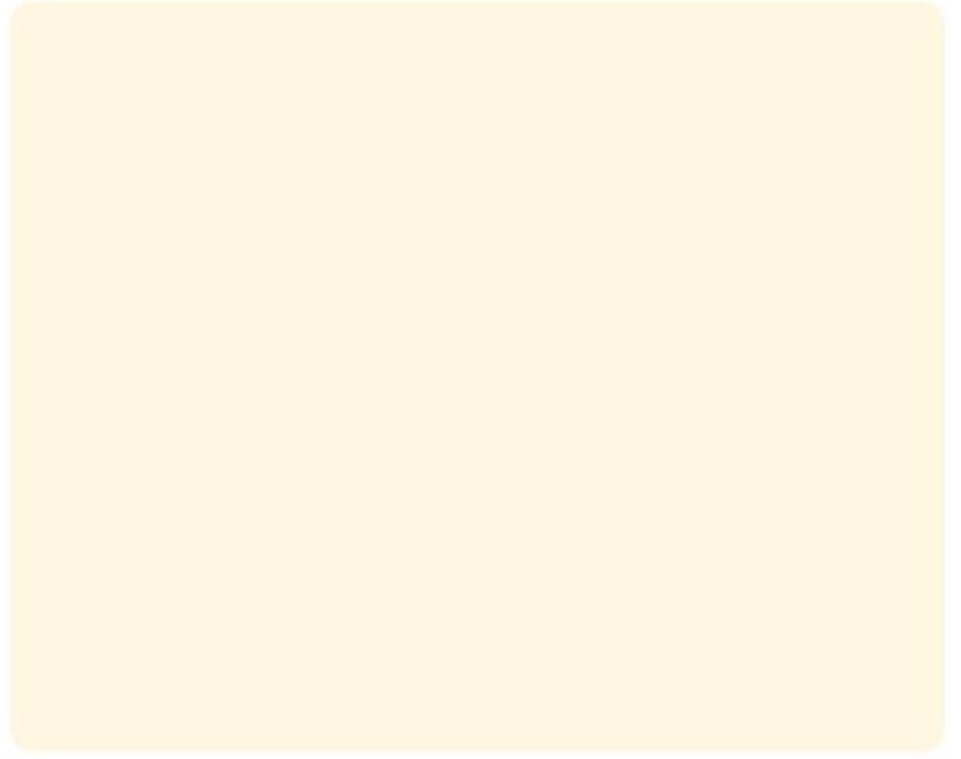
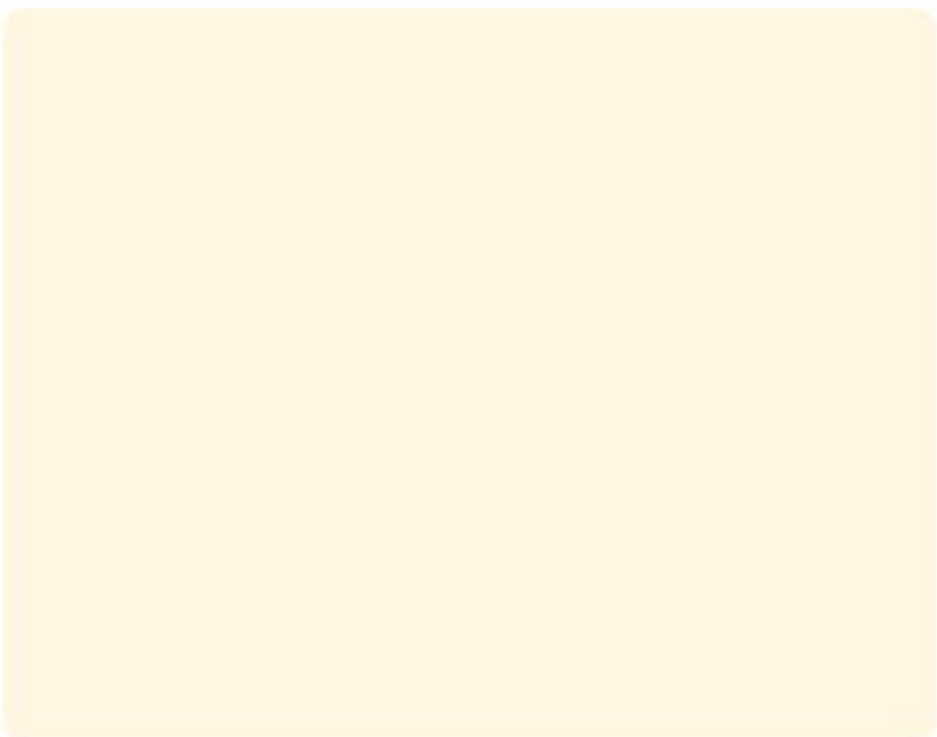


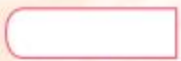


TICE 





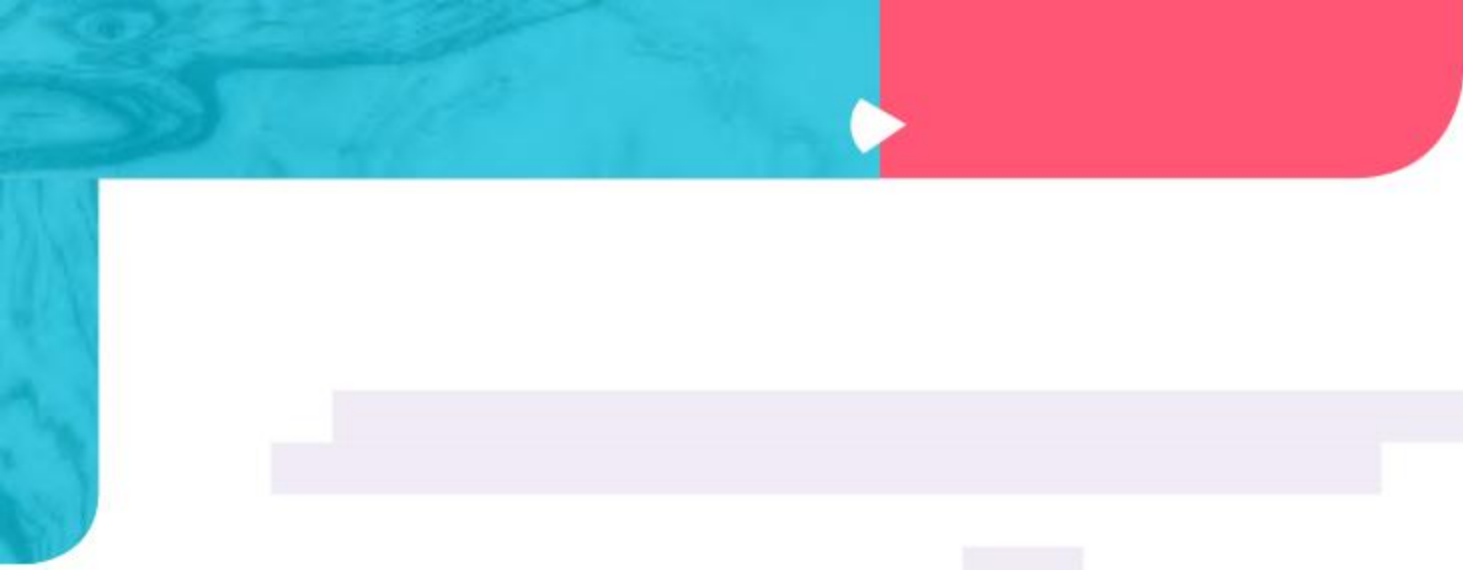










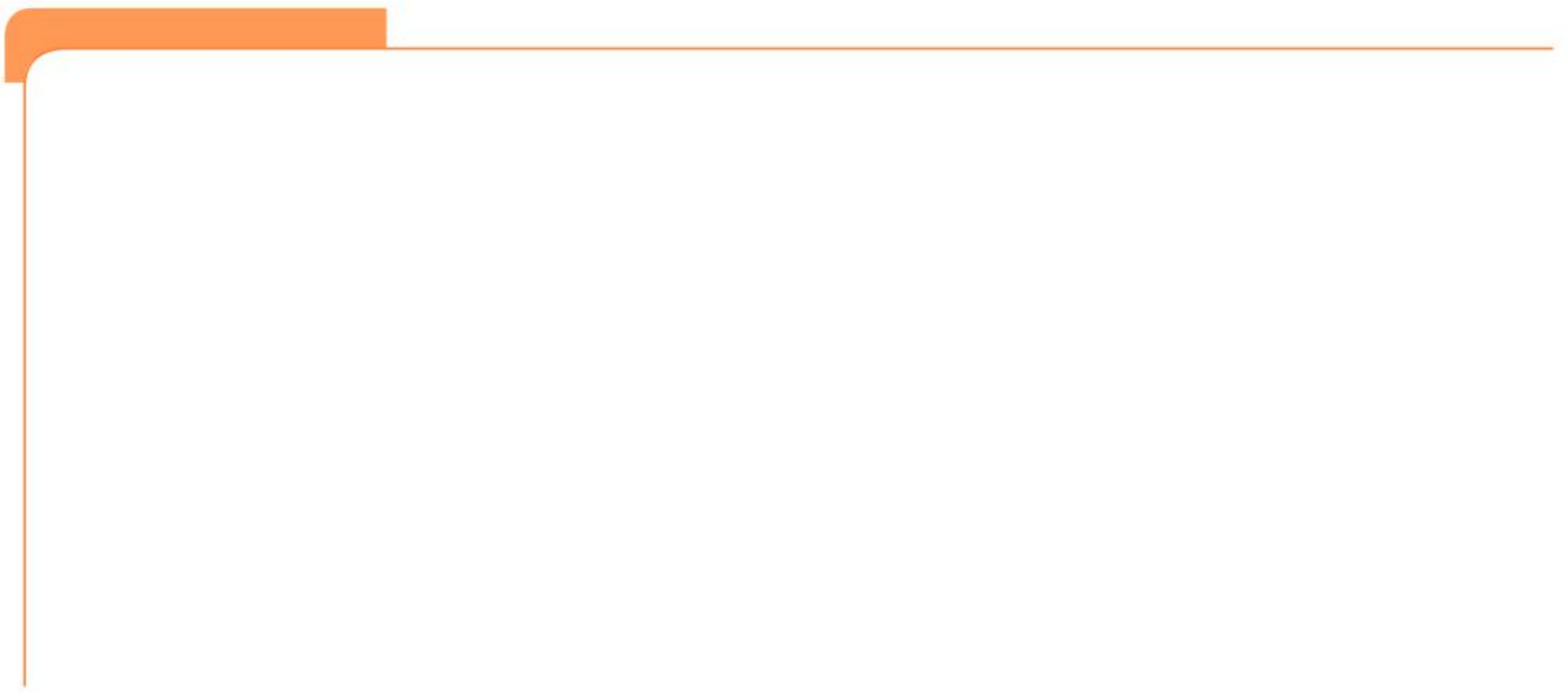
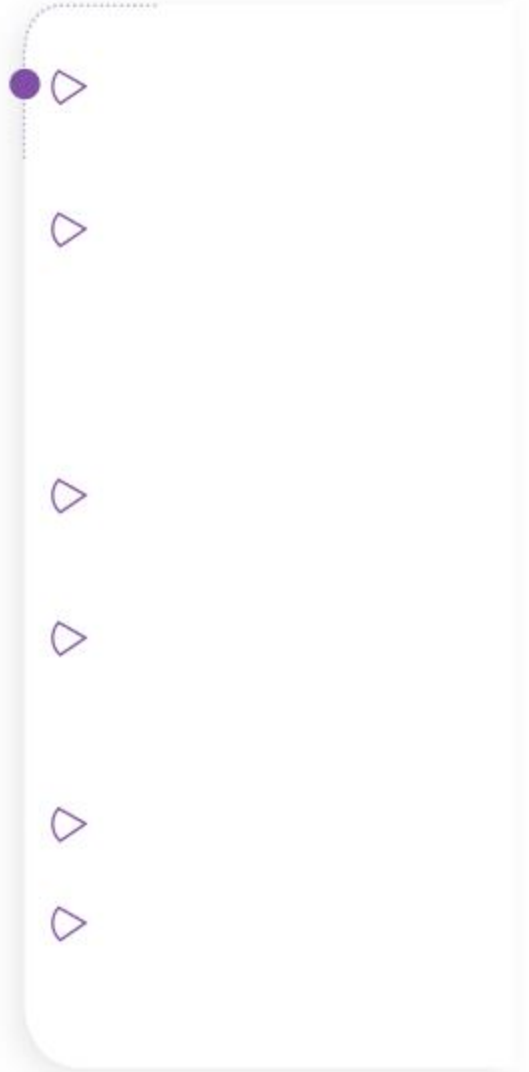


[Redacted text block]

[Redacted text block]

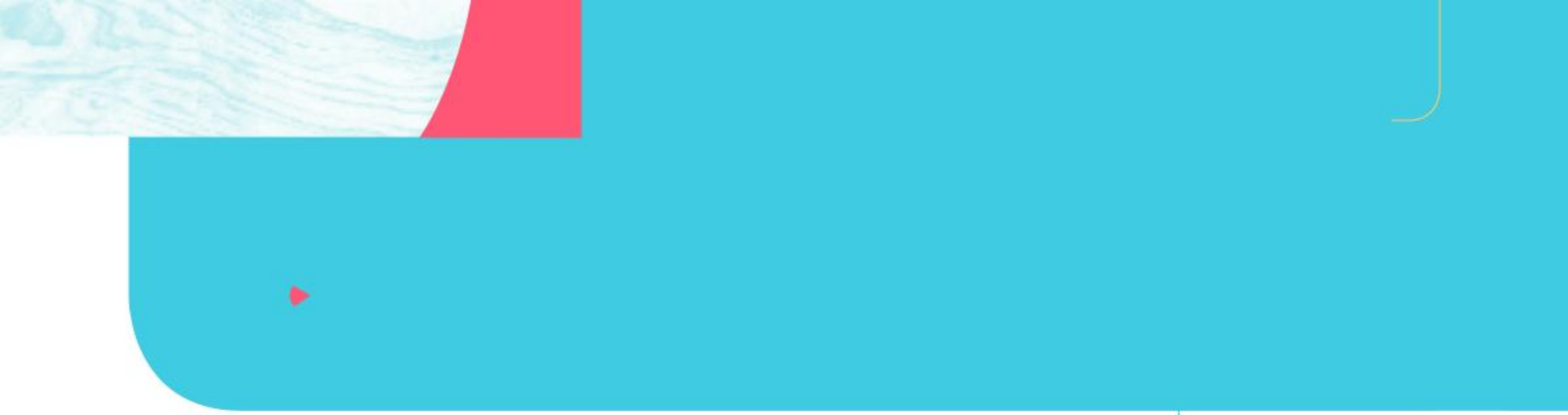
[Redacted text block]

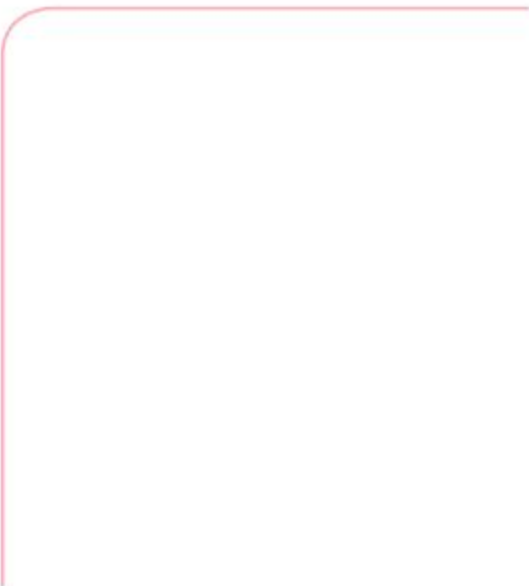
[Redacted text block]



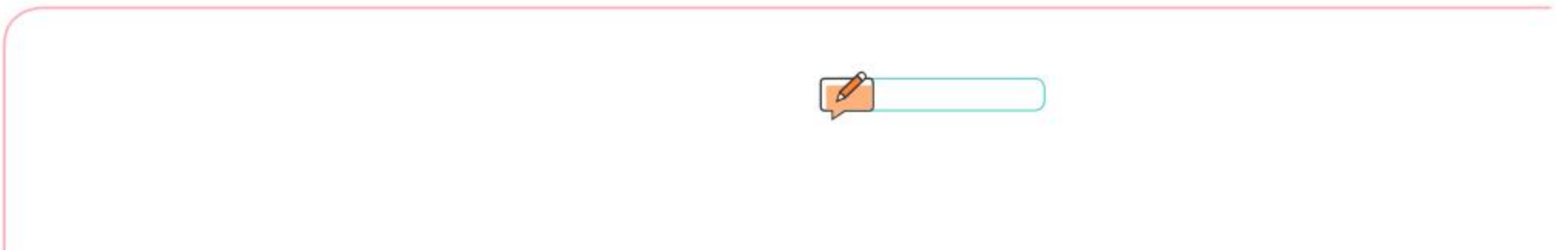
II. Ce n'est pourtant pas leur seule visée : elles ont aussi pour fonction de rendre















A horizontal rounded rectangular box with a blue border, extending from the notepad icon.

A horizontal rounded rectangular box with a red border, located on the left margin.

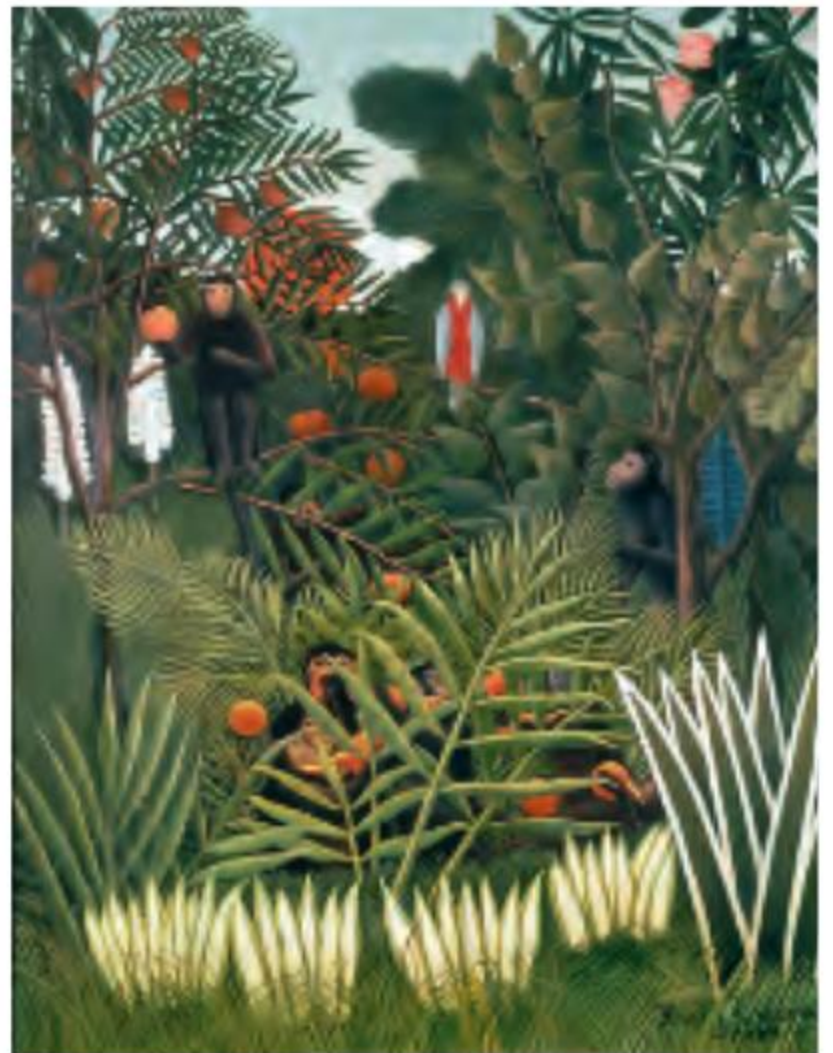
A horizontal rounded rectangular box with a red border, located on the left margin.

A horizontal rounded rectangular box with a red border, located on the left margin.

A horizontal rounded rectangular box with a red border, located on the left margin.







Quelle vision de la Chine transmet ce poème ?



sions. Que vous évoque-t-il spontanément ?



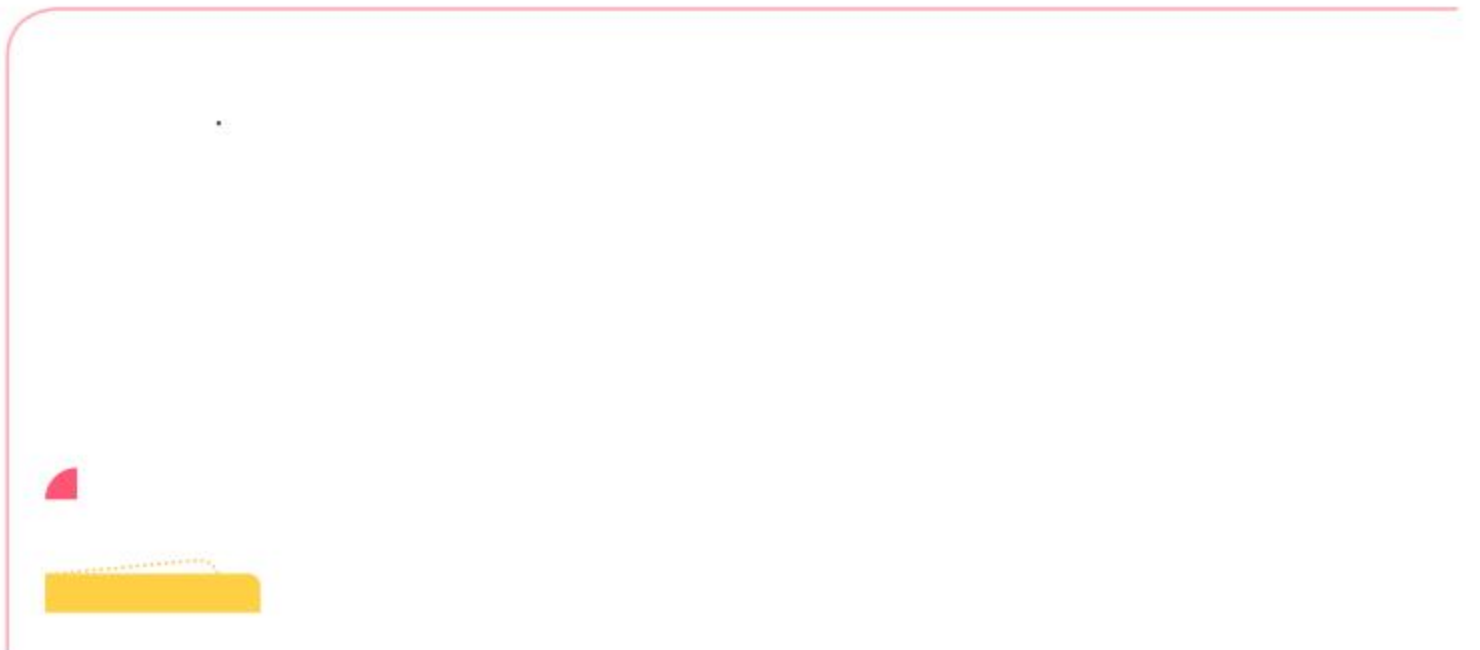
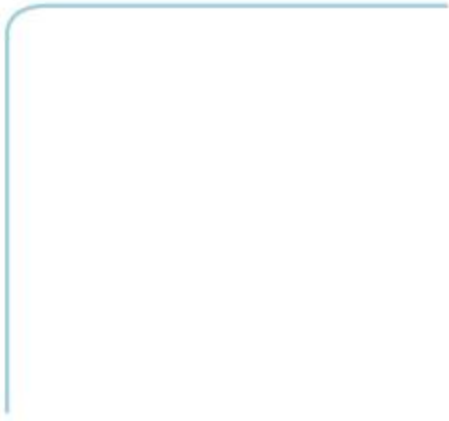








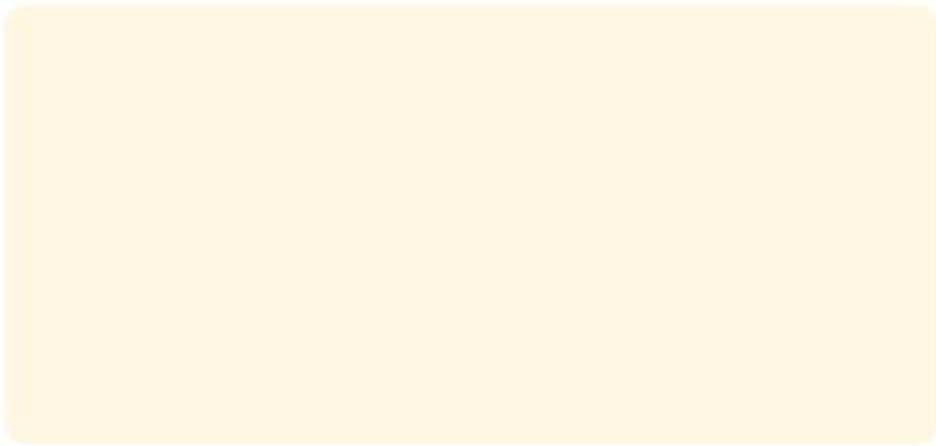






>

>



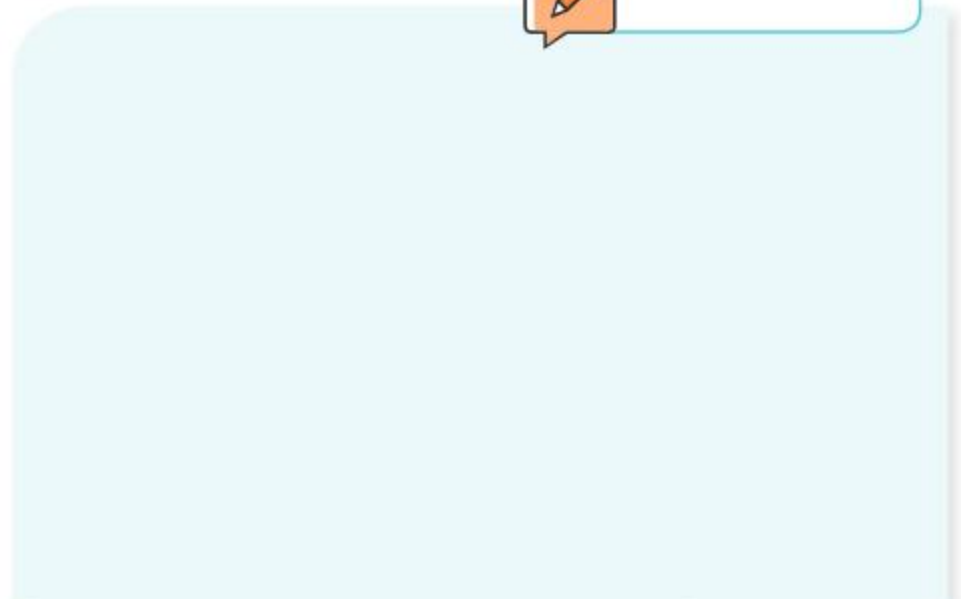
La Savane est un lieu merveilleux. On se trouve de grandes étendues de dunes de sable qui s'étendent sur des kilomètres et des kilomètres. C'est comme si on se promenait sur une plage sans fin. Et aussi on peut voir parfois des dromadaires ou des chameaux.

>



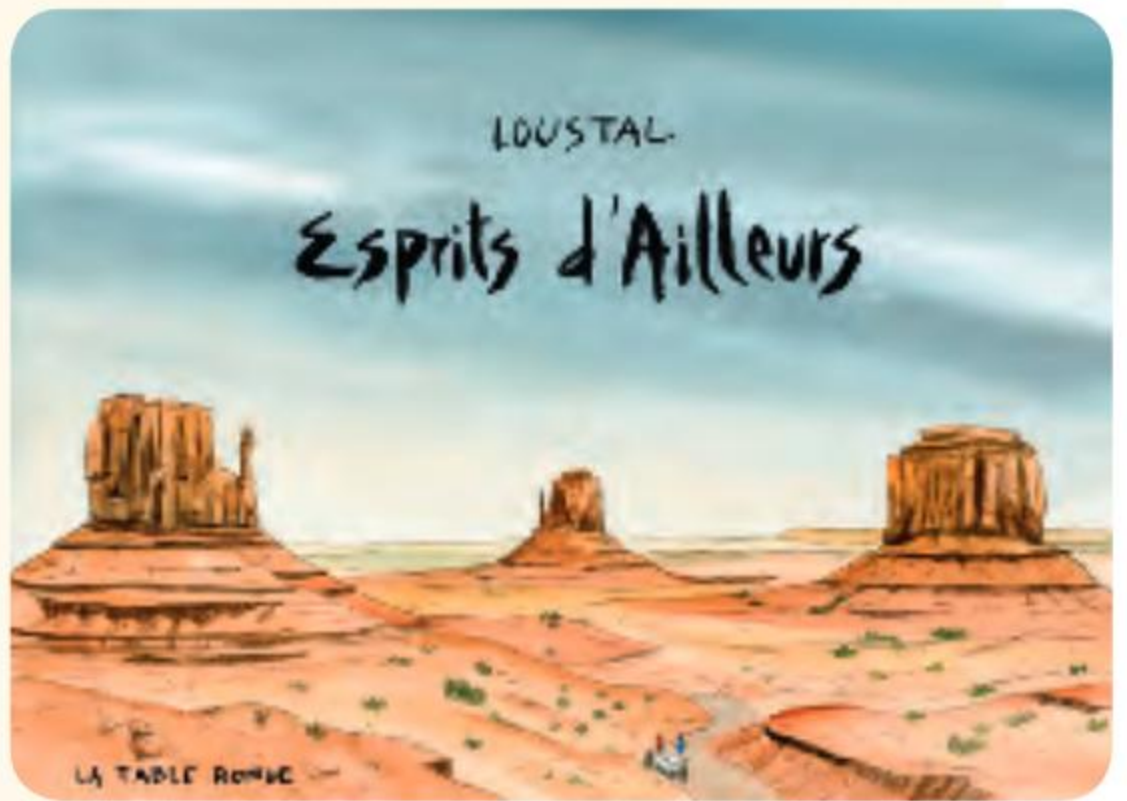
>

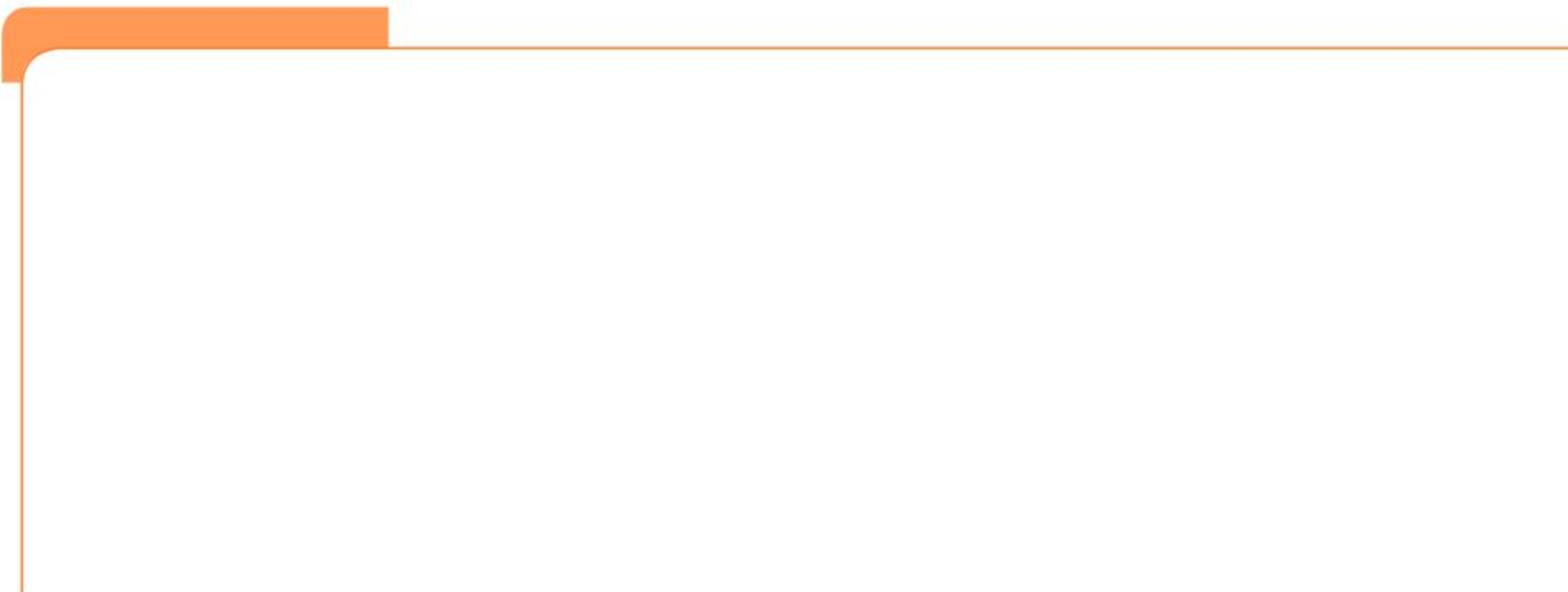
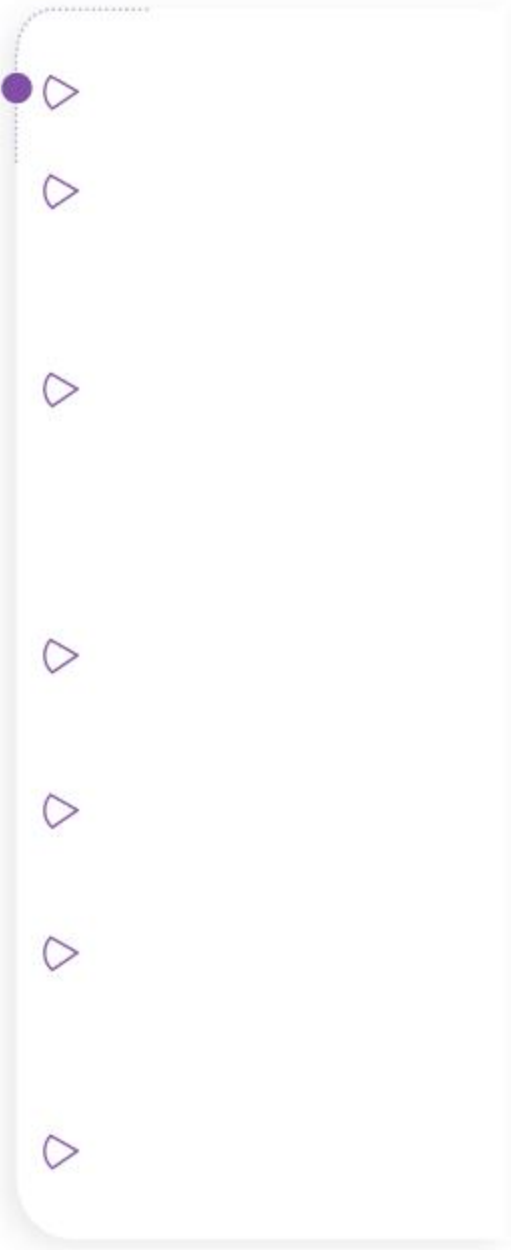
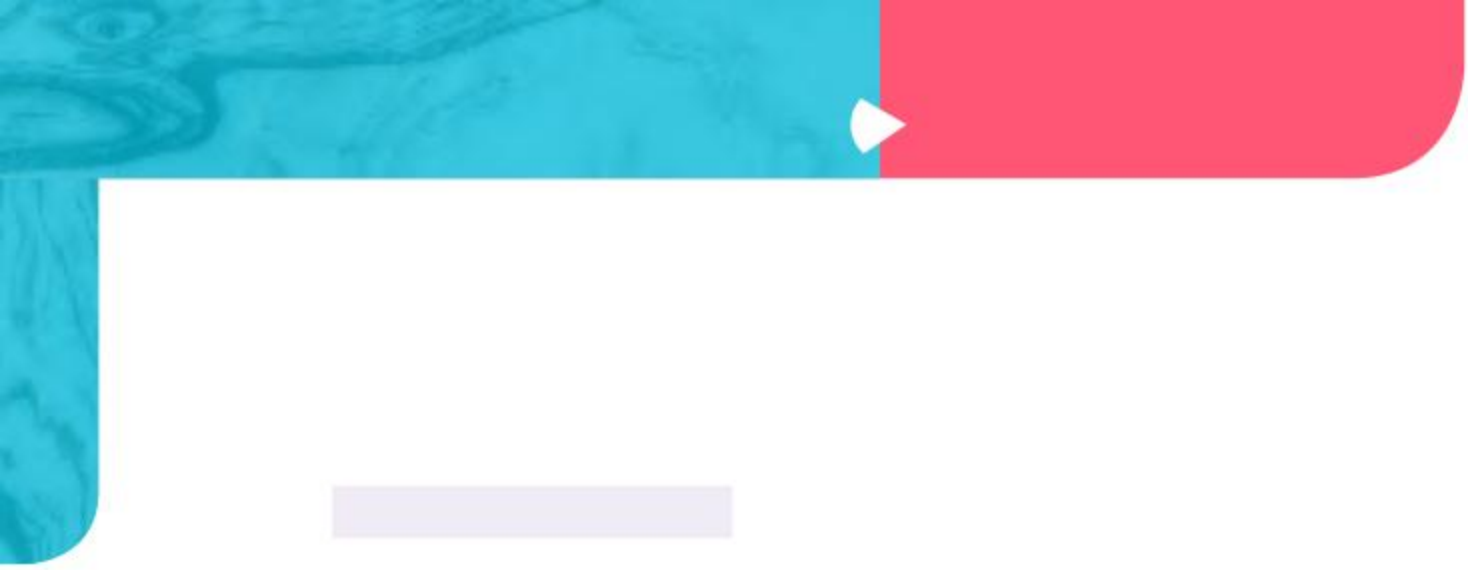
>













• Sur une feuille, préparez trois colonnes. Formulez chacune des thèses dans une colonne

• Faites comprendre à votre lecteur votre enthousiasme, à partir d'un exemple qui vous



▷ Construire un corpus

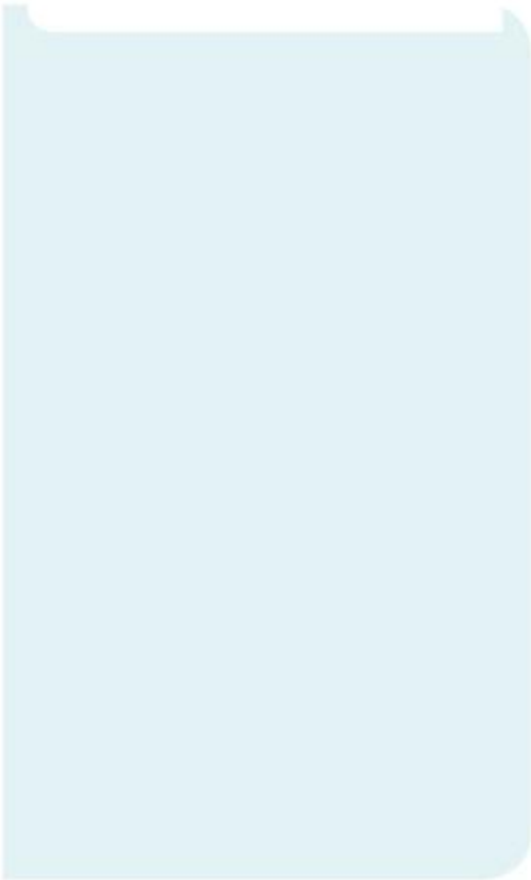


– Découverte de l'autre : rencontre

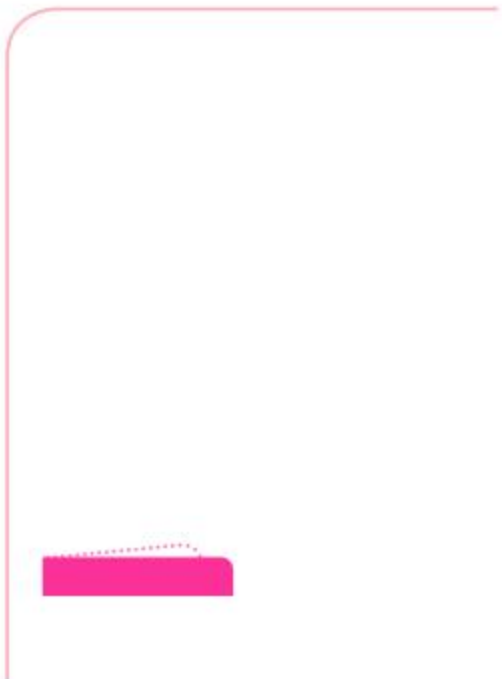


l'introduction. Vous pouvez utiliser





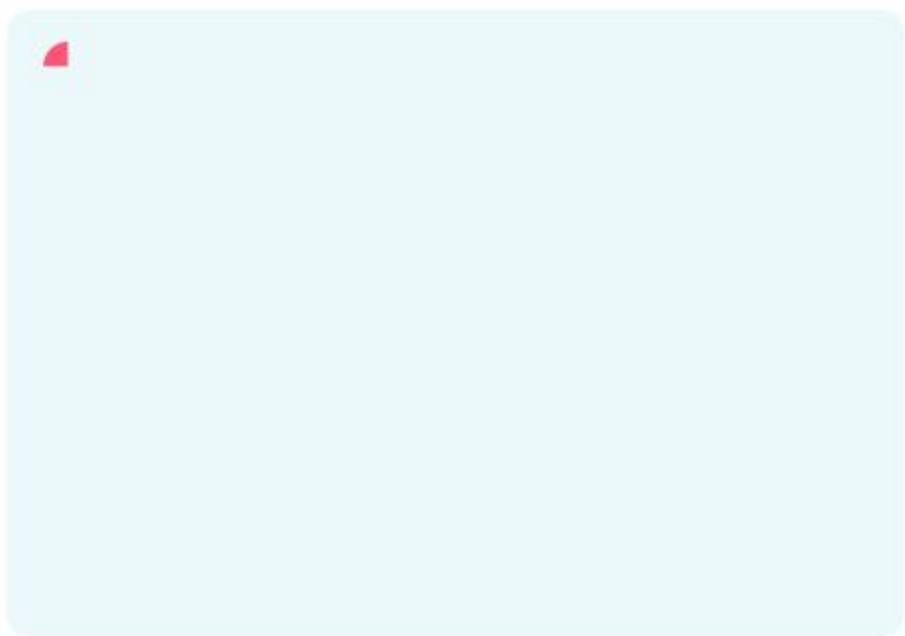
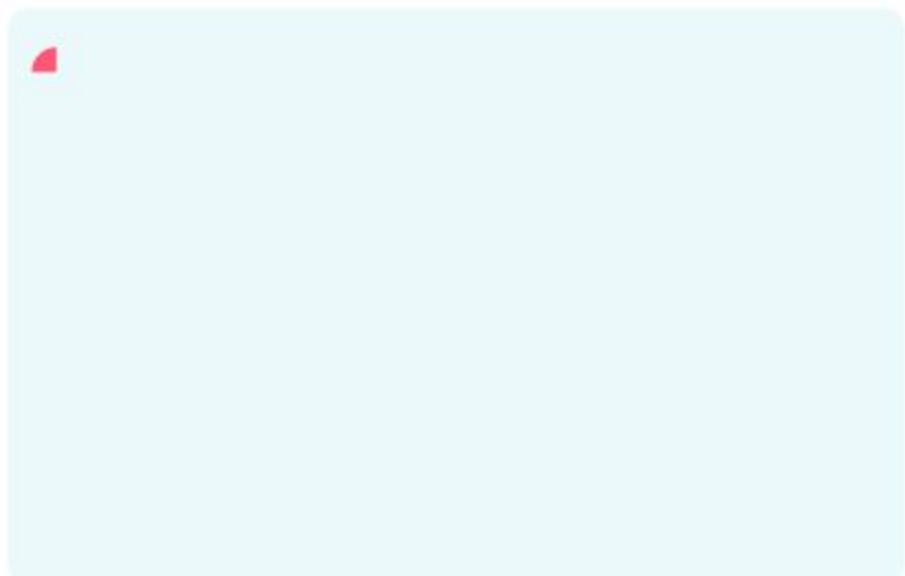






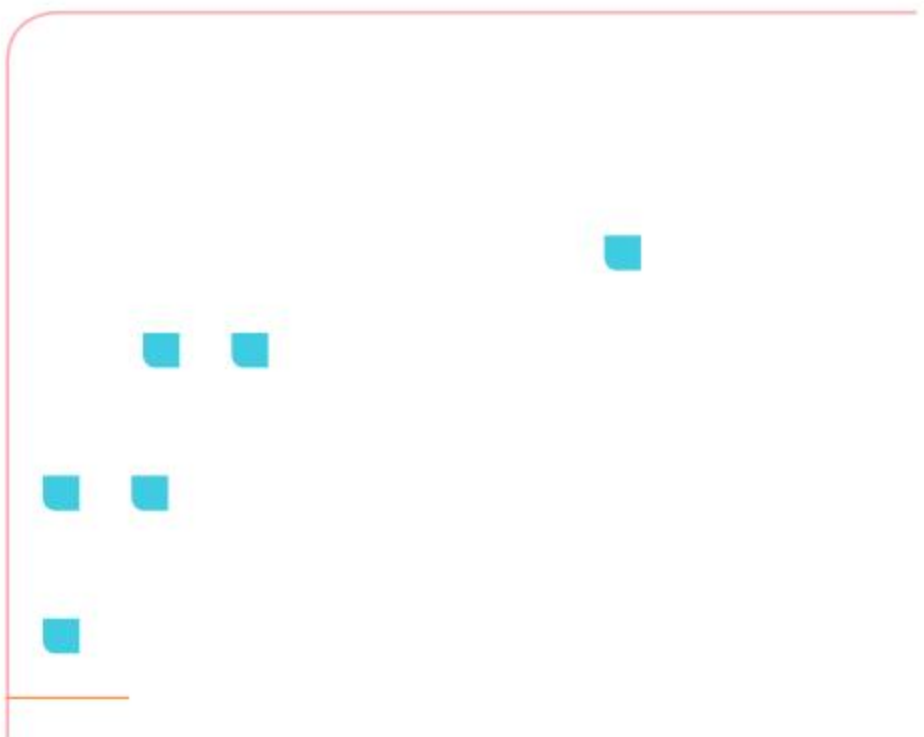
Romain Gary, « J'ai soif d'innocence », 1962















TICE 

Empty rounded rectangular box for text input.



